



EIP-2051

Isolated 16-ch DI EtherNet/IP module

Features

- Transfer protocol: EtherNet/IP
- Powerful 32-bit MCU handles efficient network traffic
- 10/100 Base-TX Ethernet, RJ-45 x 2 (Auto-negotiating, auto MDI/MDIX, LED Indicators)
- Support ARP, TCP, UDP, ICMP, DHCP, BOOTP and TFTP protocols
- Easy firmware update via Ethernet
- Removable terminal block connector
- LED display to indicate the I/O status
- Built-In I/O — DI/Counter: 16 Channels
- RoHS compliant



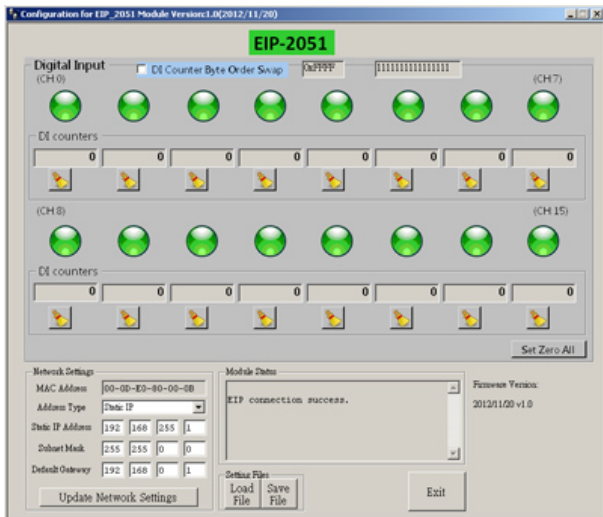
Introduction

The EIP-2051 is a remote digital input module with 16 inputs. It is designed as an EtherNet/IP adapter. Users can obtain the input status as well as the connection status of the EIP-2051 by the LEDs indication. In addition, ICPDAS provides software utility to easily configure and test the EIP-2000 modules via Ethernet.

Utility Features

ICPDAS provides the EIP-2000 configuration utility for Windows 2K/XP/Vista and Win 7.

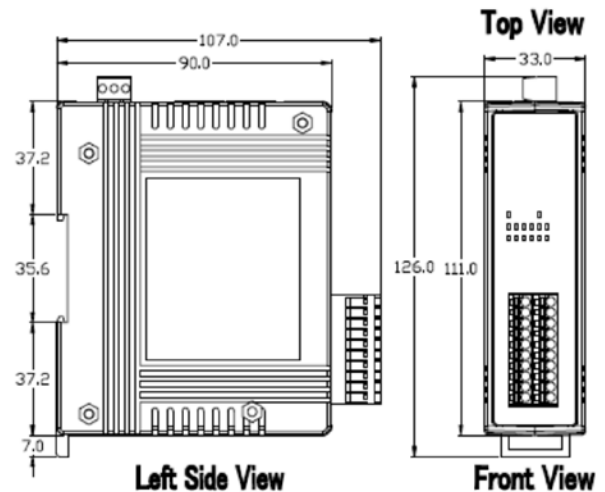
- Network parameters configuration
- DI counters inspection
- Functions configuration such as DI counters set zero
- Easy test to transmit/receive the I/O status by EtherNet/IP
- Setting files management



Wire connection

Input	ON	OFF
Relay Contact (Dry)		
Open Collector (Dry)		
Relay Contact (Wet)		
NPN Output (Wet)		

Dimensions (Units: mm)

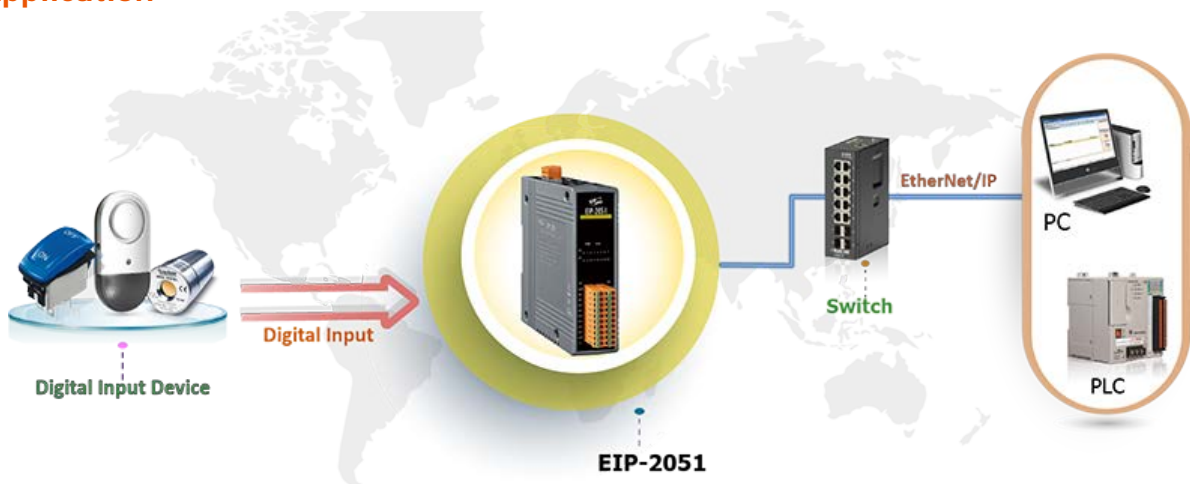


1

Hardware Specifications

Digital Input		
Channels	16	
Input Type	Dry Contact: Source, Wet Contact: Sink / Source	
Dry Contact Level	Off Voltage Level: Open	On Voltage Level: Close to GND
Wet Contact Level	Off Voltage Level: +1V _{DC} Max.	On Voltage Level: +5 V _{DC} ~ +50 V _{DC}
Counters	Max. Counts	32-bit (4,294,967,295)
	Max. Input Frequency	3 kHz
Input Impedance	7.5 kΩ	
Overtoltage Protection	+70 V _{DC}	
Communication Interface		
Connector	10/100 Base-TX, 8-pin RJ-45 x 2 Support daisy chain connection	
Standard Supported	Ethernet/IP(Adapter)	
Power		
Reverse Polarity Protection	Yes	
Power Consumption	2.9W Max.	
Powered from Terminal Block	+10V _{DC} ~ 30V _{DC}	
Mechanism		
Installation	DIN-Rail or Wall mounting	
Dimensions	33 mm x 127mm x 99mm (W x L x H)	
Environment		
Operating Temperature	-25°C ~ +75°C	
Storage Temperature	-30°C ~ +80°C	
Humidity	10% ~ 90% RH , Non-condensing	

Application



Ordering Information

EIP-2051 CR	Isolated 16-ch DI EtherNet/IP Module (RoHS)
-------------	---